



"AutoFORM LaserNet has transformed our operational efficiency"

Overview

Industry

Engineering Steels

Business Solution

Document production distribution and management system. Includes electronic creation and automatic distribution via print, fax, and e-mail, coupled to a fully integrated archiving system, for both system generated and incoming paper documents. Archive access is via a web browser.

AutoFORM LaserNet Modules

Print Output Management
Full Backup Facilities
Email & Fax Interface
COLD Archive & Web-Browser
Document Imaging System
SITPRO Export Documents

Architecture

IBM and ICL mainframes
UNIX systems
Windows 2000 NT

Business Applications

PISCES: Procurement
SHIPS: Logistics
PEAK SYSTEM: Analytical Labs
BESPOKE: Sales Order Process
LEVEL 2 Manuf. & Despatch
LOTUS Smartsuite Office
MARPAcs Web Access
SIEBEL-CRM

Company Profile

CORUS Engineering Steels is a division of CORUS PLC, formally British Steel. CES produce high specification steels for an international customer base. CES manufacture over five production sites whilst liaising with 4 other business units. 3,500 employees.



CORUS Engineering Steels

Corus Engineering Steels have achieved considerable improvements in their customer service levels and operational efficiency by introducing electronic document production and management through AutoFORM LaserNet

Corus Engineering Steels are pioneering users of AutoFORM LaserNet, output & document management software. Since installing it back in 1995, they have taken every advantage of AutoFORM's features to support their migration from labour and paper intensive business procedures, to faster more cost effective e-enabled business processing. For example, they were one of the first companies in the UK to use email to automatically deliver business documents. Corus Engineering Steels were also one of the first to achieve efficiency and customer service gains by empowering staff with online access to invoice and test certificates. This has been further improved by providing 24/7 customer access via a secure web-portal on the Corus website. In all, Mike Dagnall the IT Manager who selected AutoFORM LaserNet for Corus Engineering Steels, said: *"AutoFORM has proved to be a significant factor in the transformation of our operational efficiency. AutoFORM has enabled us to cut administration costs and improve customer service. Ultimately this has helped us to make dramatic improvements in our profitability."*

Output & Document Management

Why AutoFORM LaserNet?

Corus Engineering Steels chose AutoFORM LaserNet as it fulfilled three critical criteria.

1. Ability to manage and converge document output and data from six disparate, highly bespoke business applications including MARPAC's ERP.
2. Provide a full suite of output & document management facilities: document design & data mapping; distributed network printing; electronic delivery by email, fax, SMS, xml; integrated online document archiving and retrieval; and workflow document process automation.
3. Easy to use, allowing LOWER COST in-house document management and design.

Mike Dagnall, (retired 2003) said. *"We continue to use AutoFORM LaserNet as it is so simple to use, whilst providing some very powerful facilities. Over the years the software functionality has been added to - indeed I believe Corus needs may have inspired one or two features! But this is the advantage of using a UK software developer like EFS Technology. They are able to attend our business review meetings with our IT Consultants Cap Gemini. They work together to anticipate our needs and develop solutions to meet them. It has proved to be a very good working partnership."*

Advantages include:

Secure customer web-access to invoices and quality

assurance test certificate copies via a web-portal on the Corus web-site. A series of highly advanced firewalls and protection measures are deployed to ensure that customers can only access their own individual records.

Online integrated archive and retrieval system for all outgoing documents. Allows document images to be viewed across the network, despite originating from different IT applications. This has proved a significant efficiency aid to central services such as credit control, finance and accounts payables as the front line staff can view the documents from the different business units, from a single web-browser.

Scanning, workflow, and processing business automation solutions for supplier invoice and proof of delivery administration.

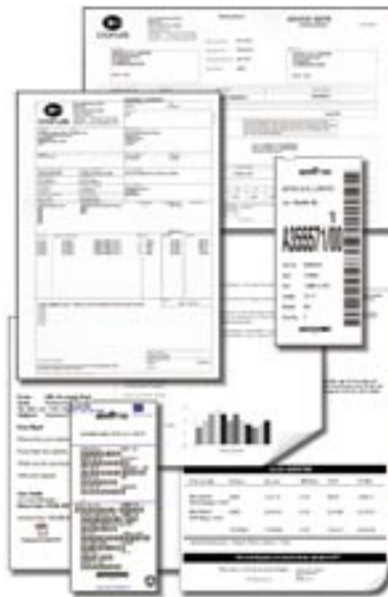
A single document design interface delivering a consistent, company enhancing, identity across the enterprise.

Ability to quickly make document changes:

Should a company detail change (and there have been four telephone area codes, two logo changes and several business acquisitions to be incorporated since the system was installed) only AutoFORM LaserNet is modified. Previously all six-business applications would have to be individually updated and this inevitably led to style differences, not to mention the cost of calling in six specialist programmers.



Easy to use data mapping interface

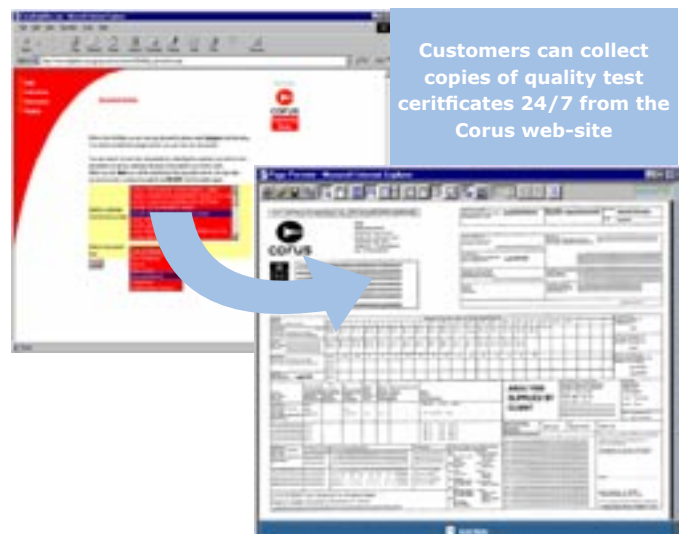


Complex document creation, made simple:

SITPRO Licensed export documents, barcode labels, hazchem forms, test certificates. Data can also be converged from several different IT applications into a single form. "With AutoFORM we are able to include purchase order details held in our SIEBEL CRM system, directly into the test certificates produced via our laboratory systems - without extensive duplicated manual data entry.

Electronic Delivery: email, fax, xml, SMS. Distributed network printing in addition to mainframe printing, and download to file for external printing.

Conclusion "All in all, AutoFORM LaserNet has proved to a very useful suite of facilities to have on board" concluded Mike Dagnall. "We find it extremely useful, and EFS Technology and their AutoFORM Software have proved to be key to our business improvement in recent years."



Customers can collect copies of quality test certificates 24/7 from the Corus web-site

WWW.EFSTECHNOLOGY.COM